



**Passionforcombustion**  
since 1983

## SRU / Claus process burners

---

### **THERMAL REACTOR BURNERS, INCINERATOR BURNERS, RGG / INLINE BURNERS**

Designed for critical Claus processes with pressurized and highly sour environment, these burners are proven companions to your thermal reaction furnaces, tail gas incinerators and RGG units.

The fully customized design, together with extensive NDE controls / procedures, allows for safe designs of these lethal service equipments.

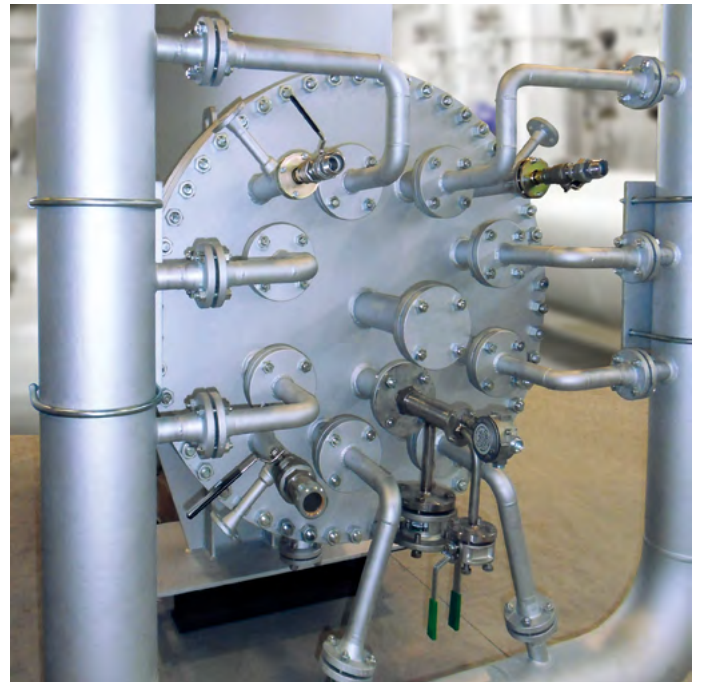
High intensity design for:

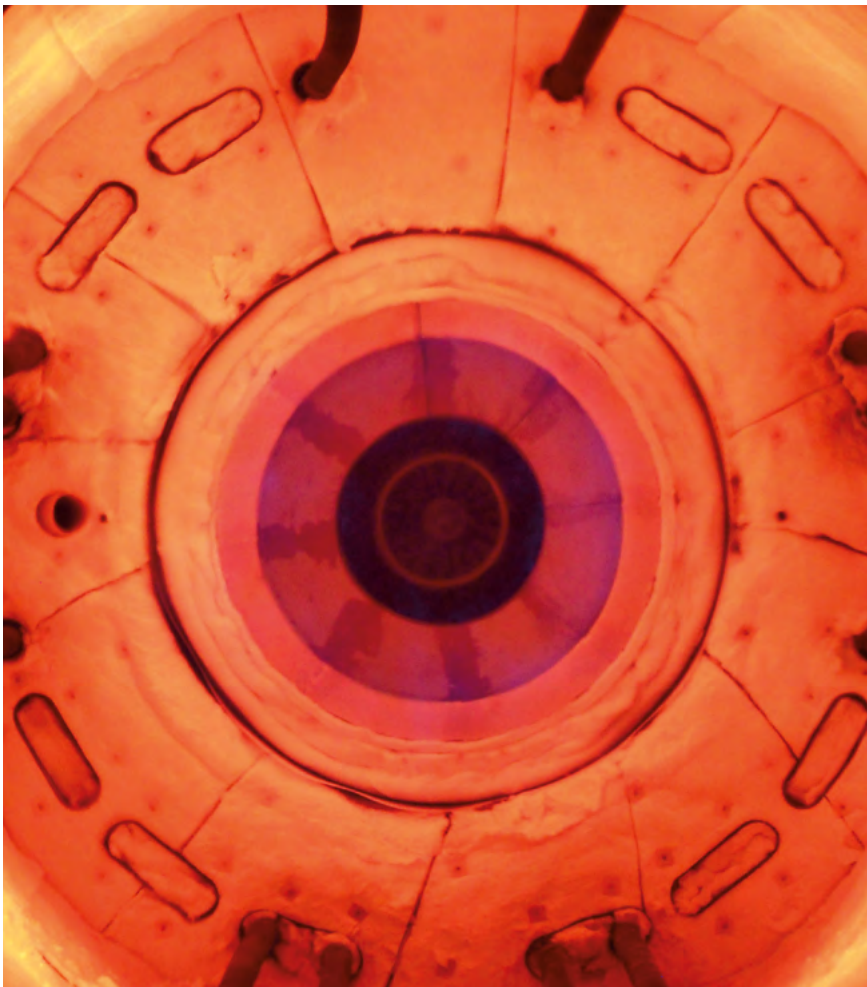
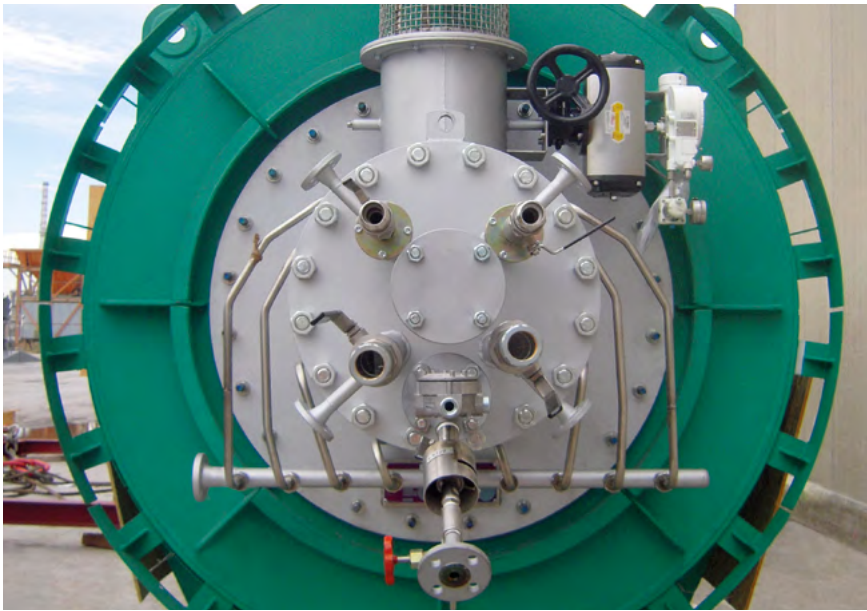
- **Claus furnaces burners**
- **RGG burners**
- **Incinerator burners**

Raw design for incinerator burners with following NO<sub>x</sub> reduction technologies:

- **Fuel staging**
- **Air staging**

Pilot burners, fixed or retractable igniters are also available with I.C.E. or other OEM designs.





## Technical features

### MECHANICAL & CONSTRUCTION CHARACTERISTICS

Design according to ASME code, temperature and pressure specified by customer or according to I.C.E. standards.

Refractory pre-installed at shop to avoid unnecessary site works.

Forced draft (thermal reactor / RGG burners) design.

Forced and natural draft (tail gas incinerator burners) designs available.

Long service life thanks to robust construction.

Variable connection schedule according to process needs:

- Fuel gas
- Acid gas
- Tail gas
- Vent streams

### PROCESS DATA / APPLICATIONS

Large set of fuels available for operation.

Large turn-down up to 8:1.

No premixing, no flash back risks.

Available duties:

- Up to 30 MW and more upon request

Required pressure drops:


- < 0.03 bar air side
- < 0.5 bar fuel gas side

Design excess air:

- 80% stoichiometry up to 300% excess air at turn-down

Available accessories on request:

- Flame monitoring systems
- Ignition systems
- Local control panels
- BMS systems
- Fuel skids

**I.C.E.**   
INTERNATIONAL COMBUSTION EQUIPMENT S.r.l.

#### I.C.E. s.r.l.

##### Headquarters

Via Cesare Battisti, 112  
20862 Arcore (MB) - ITALY  
Ph +39 039 61 80 445  
Fax +39 039 61 68 84

##### Workshop / Test Area

Via degli Artigiani, 25/27  
26010 Cremosano (CR) - ITALY  
Ph +39 0373 27 36 54  
Fax +39 0373 29 12 59

info@it-ice.com - www.it-ice.com



Member of CISQ Federation

**RINA**  
ISO 9001  
Certified Quality System



RINA, certificate n° 20585/09/S